

Cable Labels

Self over-laminating

- Convenient wrap-around over-laminate design for permanent durable barcode identification.
- Barcode identification for cables of various diameters.
- Durable soft vinyl label material conforms to cable contour.
- Outstanding durability and long term barcode readability.



FEATURES

- Labels wrap around your cable once, and then again to overlap the barcode for added protection and durability.
- Standard size is 1.75" wide by "X" where X is determined by the diameter of the cable to be identified.
- Standard sizes label cables from 1/8" through 1/2" diameter. Custom designs also available.

Conforms to Industry Standards:

ANSI-X3.182-1990
ISO 15416
RoHS, WEEE, REACH
as well as other applicable standards.

BARCODES

- Any linear barcode symbology may be utilized.
- Sequential barcoding of any sequence you specify.
- Our rigorous Quality Management System and robust data management services ensure data integrity and complete delivery.

MATERIALS

- Soft clear vinyl .0038" thick with 1.1 mil adhesive backing.
- One or more colors and logos may be included.

☎ 800.382.2323 (toll free)
☎ 858.549.9828

📠 858.549.8708
✉ Mail@ExpressCorp.com

9155 Trade Place, San Diego, CA 92126 | ExpressCorp.com

ISO 9001:2008 Certified - ITAR Registered

Member: Automatic Identification Manufacturers Association

Member: AIM UID Supplier Alliance

Member: National Assn. of Graphic Identification Product Manufacturers

Member: Specialty Graphic Imaging Association



EXPRESS

IDENTIFICATION MADE SIMPLE

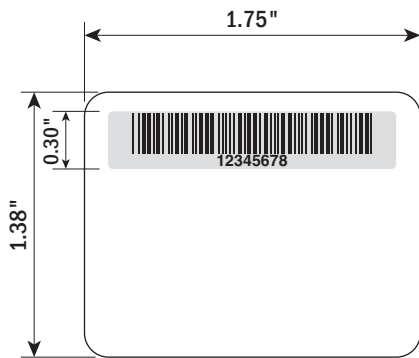
NOTES:

Label height is specific for noted cable diameters.

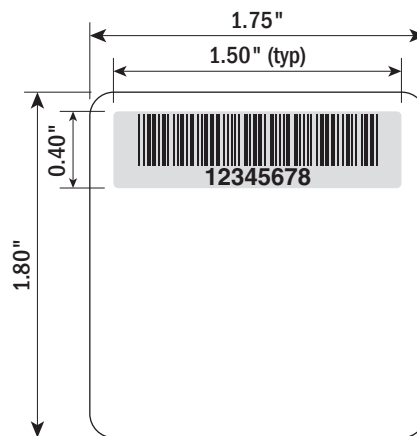
Label width can vary, depending on customer's needs.

Barcode X dimension **MUST** be 7.1 MINIMUM for scanability.

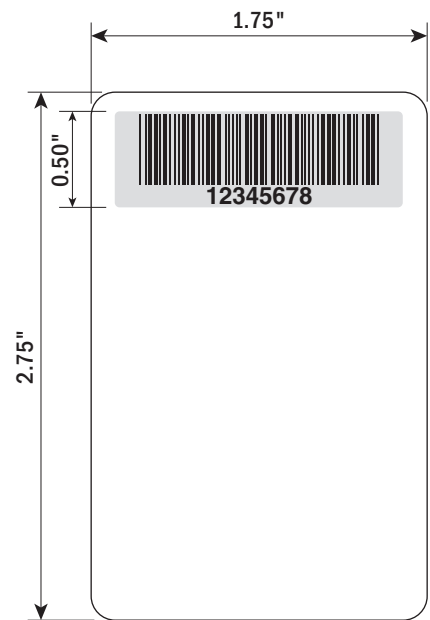
Product Code	01-09
Product Description	Self-Laminating Cable Labels
Quantity	N/A
Size	See Below
Corner radius	0.125"
Thickness / Material	0.004" (3.5mil) Clear Vinyl
Finish / Coating	Frosted Smooth
Fastening method	Permanent Pressure Sensitive Adhesive
Sequence integrity	Type A: Exact Quantity
Barcode symbology	Code 39 (shown)
Numbering sequence	Per customer specification
Data characters	8 Character maximum for 1.75" label width
X Dimension	9.58 mils
Density	7.947 characters per inch
Wide to narrow ratio	2.0 : 1.0
Presentation	Sheets
Additional notes	The barcode matches the human readable



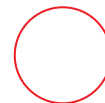
1/4" (0.25) dia. cable



3/8" (0.375) dia. cable





1/2" (0.50) dia. cable



1/8" (0.125) dia. cable



COLORS: 	Drawing #	CableLabelSpecs.pdf	 EXPRESS (858) 549-9828
	* Scale	100%	
	Revision #	A	
	Drawn by	MT	